

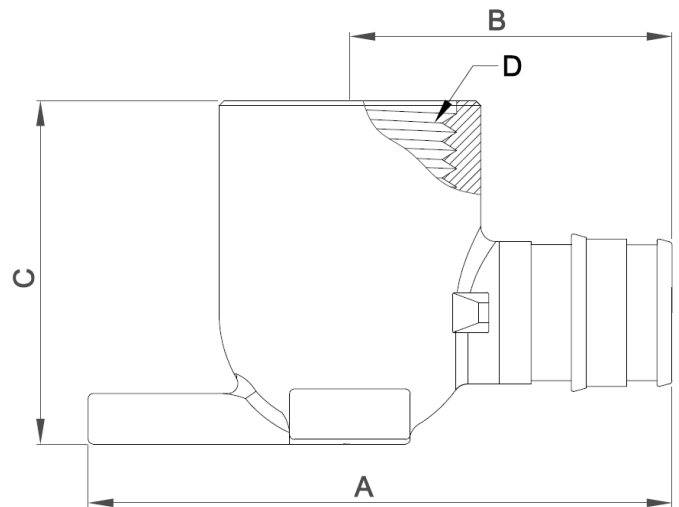
SPECIFICATION SHEET

F1960 PPSU PEX Fitting – Female Drop Ear

Rev. 1.2 Issued: December 2018

Materials

Solvay Acudel 22000 BK937 /NT15



Product Information and Usage

The components covered by this specification are intended for use in residential building and commercial building only.

The applications include:

- (a) Plumbing systems - Hot and cold potable water distribution systems
- (a) Radiant Heating and Cooling systems
- (c) Maximum Working temperature/Pressure
210°F (99°C) at 150psi (1034kPa)

Drawing / PN#	A (mm)	B (mm)	C (mm)	D	Weight (g)	Description
U5710-W/B	52.6	26.0	34.0	1/2" NPT	16.5	1/2" PEX x 1/2" Female NPT Drop Ear Elbow

Installation:

1. Use listed expansion ring and Pex-a tubing for assembly.
2. Thread fitting design need match supply fitting and supply fitting's specification should according to 4.4.7 figure 2-a of ASME A112.18.1-2011 /CSA B125.1-11. No burrs, flash, sharp edge is allowed on sealing surface of shanks.
3. **If you use Tape Sealant to assemble threaded joint, please use it correctly. Please tighten threaded joints 1-2 turns beyond finger tight. Avoid "backing up" the wrenched assembly. DO NOT over-tighten. Max. Torque: 10ft-lbs. Hold end and pull tape tight into threads**



Standard

CSA B137.5; ASTM F196, F877; NSF61; NSF14; NSF372

Remark:

Each fitting has "NCI" trademark;

Additional testing, requirement or certification are required if fittings are used other than residential building and commercial building.

Listing

Contact Information:

National Craft Industries, Inc.
11F-5, No. 266, Sec. 1, Wen Hua 2nd Road,
Lin Ko District, New Taipei City 244, Taiwan,
R.O.C.
TEL:886-2-2609-6891
FAX:886-2-2609-7767
E-mail: nci.johnson@nationalcraft.biz
www.ppsu-fittings.com

NOTE:

Our PPSU pex fittings have been made white or black in color so that any harmful chemical or UV exposure can be witnessed, and suspect fittings can be removed from use.

Do not expose PPSU fittings to any foreign substance that includes but is not limited to VOC (volatile organic chemical) compounds, paints, solvents, glues, cleaners and disinfectants. PPSU pex fittings that are exposed to these types of substances are at risk of failures.

PPSU pex fittings must be protected from UV exposure, which can damage them. UV exposure during storage, handling and installation should not exceed 15 days.