

# SPECIFICATION SHEET

## PPSU PEX Fitting - Plug

Rev. 2.5 Issued: Dec. 20, 2018



### Materials

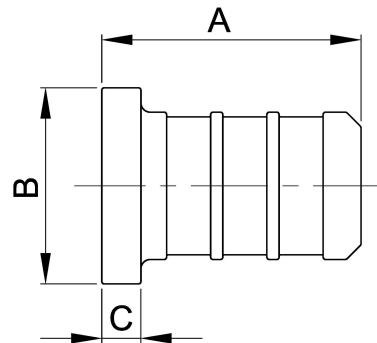
Solvay Acudel 22000 BK937 /NT15 or Radel R5100 BK937/NT15

### Product Information and Usage

The components covered by this specification are intended for use in residential building and commercial building only.

The applications include:

- (a) Plumbing systems - Hot and cold potable water distribution systems
- (b) Sealed central heating/under floor heating systems
- (c) Radiant Heating and Cooling Systems
- (d) Maximum Working temperature/Pressure  
210°F (99°C) at 150psi (1034kPa)



Pex end of fitting is used to connect to Pex tubing.

Drawing / PN#	A ( mm )	B ( mm )	C ( mm )	Weight ( g )	Description
T6200/T-300-W/B	21.2	14.0	3.2	1.4	3/8" PEX PLUG
T6210/T-400-W/B	21.2	16.0	3.2	1.9	1/2" PEX PLUG
T6220/T-600-W/B	21.2	21.0	3.2	3.7	3/4" PEX PLUG
T6230/T-800-W/B	25.2	25.0	3.5	6.5	1" PEX PLUG

### Installation:

Use listing copper or stainless steel ring and Pex tubing for assembly.

### Standard

CSA B137.5; ASTM F2159, F877; NSF61; NSF14; AB1953

### Remark:

Each fitting has "NCI" trademark;

Additional testing, requirements or certification are required if fittings are used other than residential building and commercial building.

### Listing

IAPMO file #5932, N5932, 6020, 7653

### Contact Information:

**National Craft Industries, Inc.**  
11F-5, No. 266, Sec. 1, Wen Hua 2nd Road,  
Lin Ko District, New Taipei City 244, Taiwan,  
R.O.C.

**TEL:886-2-2609-6891**

**FAX:886-2-2609-7767**

**E-mail: [nci.johnson@nationalcraft.biz](mailto:nci.johnson@nationalcraft.biz)**

**[www.ppsu-fittings.com](http://www.ppsu-fittings.com)**

### NOTE:

**Our PPSU pex fittings have been made white or black in color so that any harmful chemical or UV exposure can be witnessed, and suspect fittings can be removed from**

use.

Do not expose PPSU fittings to any foreign substance that includes but is not limited to VOC (volatile organic chemical) compounds, paints, solvents, glues, cleaners and disinfectants. PPSU pex fittings that are exposed to these types of substances are at risk of failures.

PPSU pex fittings must be protected from UV exposure, which can damage them. UV exposure during storage, handling and installation should not exceed 15 days.