

## SPECIFICATION SHEET

### PPSU PEX Fitting - Swivel Adapter with Hex Nut

Rev. 2.5 Issued: Dec.20, 2018



#### Materials

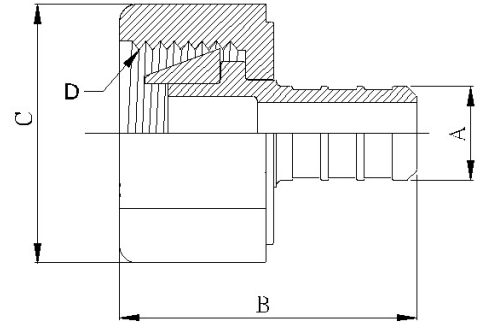
- (a) Solvay Acudel 22000 BK937 /NT15 or Radel R5100 BK937/NT15.
- (b) Swivel nut is made from Nylon
- (c) Washer is made from either Santoprene ,NBR or EPDM.

#### Product Information:

The components covered by this specification are intended for use in residential building and commercial building only.

The applications include:

- (a) Plumbing systems - Hot and cold potable water distribution systems
- (b) Sealed central heating/under floor heating systems
- (c) Radiant Heating and Cooling Systems
- (d) Maximum Working temperature/Pressure  
210°F (99°C) at 150psi (1034kPa)



Drawing / PN#	A ( mm )	B ( mm )	C	Weight ( g )	Description
T2080-W/C-4J0-W/B	40.3	22	3/4" NPSM	18.46	1/2" PEX x 3/4" Female NPSM Swivel With Hex Nut
T2090-W/C-6J0-W/B	40.3	22	3/4" NPSM	19	3/4" PEX x 3/4" Female NPSM Swivel With Hex Nut

#### Installation:

1. Use listing copper or stainless steel ring and Pex tubing for assembly.
2. Tight Lock force should be 30 lbs/inch with tolerance +/- 2.5 lbs/inch.
3. Swivel elbow design need match supply fitting and supply fitting's specification should according to 4.4.7 figure 2-a of ASME A112.18.1-2011 /CSA B125.1-11. No burrs, flash, sharp edge is allowed on sealing surface of shanks.

#### Standard

CAN/CSA B137.5; ASTM F2159, F877;  
NSF61; NSF14; AB1953

#### Remark:

Each fitting has "NCI" trademark;

Additional testing, requirements or certification are required if fittings are used other than residential building and commercial building.

#### Listing

IAPMO file #5932, N5932, 6020, 7653

#### Contact Information:

**National Craft Industries, Inc.**  
**11F-5, No. 266, Sec. 1, Wen Hua 2nd Road,**  
**Lin Ko District, New Taipei City 244, Taiwan,**  
**R.O.C.**  
**TEL:886-2-2609-6891**  
**FAX:886-2-2609-7767**  
**E-mail: [nci.johnson@nationalcraft.biz](mailto:nci.johnson@nationalcraft.biz)**  
**[www.ppsu-fittings.com](http://www.ppsu-fittings.com)**

#### NOTE:

**Our PPSU pex fittings have been made white or black in color so that any harmful chemical or UV exposure can be witnessed, and suspect fittings can be removed from use.**

Do not expose PPSU fittings to any foreign substance that includes but is not limited to VOC (volatile organic chemical) compounds, paints, solvents, glues, cleaners and disinfectants. PPSU pex fittings that are exposed to these types of substances are at risk of failures.

PPSU pex fittings must be protected from UV exposure, which can damage them. UV exposure during storage, handling and installation should not exceed 15 days.