

# SPECIFICATION SHEET

## PPSU PEX Fitting – Elbow

Rev. 2.5 Issued: Dec. 20, 2018



### Materials

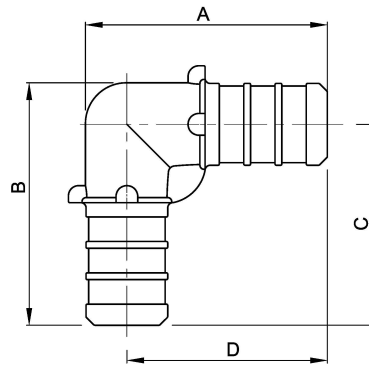
Solvay Acudel 22000 BK937 /NT15 or Radel R5100 BK937/NT15

### Product Information:

The components covered by this specification are intended for use in residential building and commercial building only.

The applications include:

- (a) Plumbing systems - Hot and cold potable water distribution systems
- (b) Sealed central heating/under floor heating systems
- (c) Radiant Heating and Cooling Systems
- (d) Maximum Working temperature/Pressure  
210°F (99°C) at 150psi (1034kPa)



Drawing / PN#	A ( mm )	B ( mm )	C ( mm )	D ( mm )	Weight ( g )	Description
T5200/E-303-W/B	32.4	32.4	27.8	27.8	2.7	3/8" PEX ELBOW
T5220/E-404-W/B	35.6	35.6	29.5	29.5	4.5	1/2" PEX ELBOW
T5230/E-604-W/B	35.6	39.0	30.5	29.5	6.4	3/4" x 1/2" PEX ELBOW
T5240/E-606-W/B	40.5	40.5	32.0	32.0	10.5	3/4" PEX ELBOW
T5250/E-808-W/B	50.75	50.75	38.75	38.75	19.1	1" PEX ELBOW

### Installation:

Use listing copper or stainless steel ring and Pex tubing for assembly.

### Standard

CSA B137.5; ASTM F2159, F877; NSF61; NSF14; AB1953

### Remark:

Each fitting has “NCI” trademark;

Additional testing, requirements or certification are required if fittings are used other than residential building and commercial building.

### Listing

IAPMO file #5932, N5932, 6020, 7653

### Contact Information:

**National Craft Industries, Inc.**  
**11F-5, No. 266, Sec. 1, Wen Hua 2nd Road,**  
**Lin Ko District, New Taipei City 244, Taiwan,**  
**R.O.C.**  
**TEL:886-2-2609-6891**  
**FAX:886-2-2609-7767**  
**E-mail: [nci.johnson@nationalcraft.biz](mailto:nci.johnson@nationalcraft.biz)**  
**[www.ppsu-fittings.com](http://www.ppsu-fittings.com)**

### NOTE:

**Our PPSU pex fittings have been made white or black in color so that any harmful chemical or UV exposure can be witnessed, and suspect fittings can be removed from**

use.

Do not expose PPSU fittings to any foreign substance that includes but is not limited to VOC (volatile organic chemical) compounds, paints, solvents, glues, cleaners and disinfectants. PPSU pex fittings that are exposed to these types of substances are at risk of failures.

PPSU pex fittings must be protected from UV exposure, which can damage them. UV exposure during storage, handling and installation should not exceed 15 days.